

Request for Quotations (Services)
Open Market
Lowest Price, Technically Acceptable

RFQ Number: USDC RFQ -020
Request Date: 2 , 201

PUBLIC NOTIFICATION: Paint and Carpet Suites 1350 (Bryant Annex); 1724 and 1722 - Prettyman Courthouse

Special Notes:

Quotes should be e-mailed or hand delivered to the below listed address by **(5:00 p.m. Thursday, September 29, 2016)** local time. Hand carried quotes must be delivered by the same time at (333 Constitution Ave., NW Ste. 1724) to (**Attention: (Ernest Gambrill)**). Submit a technical proposal describing your approach and project management in accordance with the attached statement of work. Use the attached quote sheet for a firm fixed price for job.

A firm fixed price award from this RFQ will be made based on the lowest priced, technically acceptable offer.

Requests to see the space for measurements, as well as, questions concerning this RFQ should be sent to:

Ernest Gambrill
U.S. District Court
333 Constitution Ave., NW Ste. 1724 or
Procurement & Facilities
(202) 354-3018 office
ernest_gambrill@dcd.uscourts.gov

Juan Rivera
U.S. District Court
333 Constitution Ave., NW Ste. 1724
Procurement & Facilities
(202) 354-3013 office
juan_rivera@dcd.uscourts.gov

Services are to be performed at: (*E. Barrett Prettyman Courthouse, 333 Constitution Ave.,NW Washington, DC 20001*).

Sincerely,

(*Ernest Gambrill*)
Contracting Officer

Attachments: Scope of Work
Wage Determination

Quote Sheet for RFQ Number: USDC RFQ 1 -020

PROPOSE A FIRM FIXED PRICE FOR JOB: \$ _____

Vendor's Name

Vendor's Phone Number/fax number/e-mail address

Vendor's Street Address

Vendor's City, State, and Zip Code

Signature of Person Authorized to Sign Quote

_____ _____
Date DUNS number

Printed or Typed Name of Signator

Discount Terms or Net 30?

APPLICABLE JUDICIARY TERMS AND CONDITIONS

1. Clause B-5, Clauses Incorporated by Reference (SEP 2010)

This contract incorporates one or more clauses by reference, with the same force and effect as if they were given in full text. Upon request, the contracting officer will make their full text available. Also, the full text of a clause may be accessed electronically at this address: <http://www.uscourts.gov/procurement.aspx>

(end)

2. The following judiciary clauses, that the Contracting Officer has indicated are applicable, are incorporated in this contract by reference:

Clause 3-3 Provisions, Clauses, Terms and Conditions - Small Purchases (JUN 2014)

Clause 3-175 Fair Labor Standards Act and Service Contract Act – Price Adjustment (Multiple Year and Option Contracts) (JUN 2012)

Clause 6-20 Insurance – Work on or Within a Judiciary Facility (APR 2011)

Clause 7-55 Contractor Use of Judiciary Networks (JUN 2014)

Clause 7-65 Protection of Judiciary Buildings, Equipment and Vegetation (APR 2013)

Clause 7-115 Availability of Funds (JAN 2003)

3. The following full text clauses are incorporated if the Contracting Officer has marked them as applicable (X):

Clause 2-90C Option to Extend Services (APR 2013)

The judiciary may require continued performance of any services within the limits and at the rates specified in the contract. These rates may be adjusted only as a result of revisions to prevailing labor rates provided by the Secretary of Labor. The option provision may be exercised more than once, but the total extension of performance hereunder shall not exceed 6 months. The contracting officer may exercise the option by written notice to the contractor no later than _____ calendar days prior to the contract's current expiration date.

(end)

Clause 2-90D Option to Extend the Term of the Contract (APR 2013)

(a) The judiciary may extend the term of this contract by written notice to the contractor no later than _____ calendar days prior to the contract's current expiration date provided that the judiciary gives the contractor a preliminary written notice of its intent to extend at least _____ calendar days [60 days unless a different number of days is inserted] before the contract expires. The preliminary notice does not commit the judiciary to an extension.

(b) If the judiciary exercises this option, the extended contract shall be considered to include this option clause.

(c) The total duration of this contract, including the exercise of any options under this clause, shall not exceed _____ (months) (years).

(end)

4. Incorporation of Department of Labor Wage Rate Determination

SEE ATTACHED

SUBMISSION OF QUOTE AND EVALUATION OF OFFERS

1. The following judiciary provisions, that the Contracting Officer has indicated are applicable, are incorporated in this solicitation:

___ Provision B-1, Solicitation Provisions Incorporated by Reference (SEP 2010)

This solicitation incorporates one or more solicitation provisions by reference, with the same force and effect as if they were given in full text. Upon request, the contracting officer will make their full text available. The offeror is cautioned that the listed provisions may include blocks that must be completed by the offeror and submitted with its quotation or offer. In lieu of submitting the full text of those provisions, the offeror may identify the provision by paragraph identifier and provide the appropriate information with its quotation or offer. Also, the full text of a solicitation provision may be accessed electronically at this address: <http://www.uscourts.gov/procurement.aspx>.

(end)

Solicitation Provisions Incorporated by Reference

___ Provision 2-70 Site Visit (JAN 2003)

___ Provision 2-85A Evaluation Inclusive of Options (JAN 2003)

___ Provision 3-135 Single or Multiple Awards (JAN 2003)

Additional Solicitation Provisions

X Provision 4-1, Type of Contract (JAN 2003)

The judiciary plans to award a **FIRM FIXED PRICE** type of contract under this solicitation, and all offers shall be submitted on this basis. Alternate offers based on other contract types will not be considered.

(end)

X Provision 3-5, Taxpayer Identification and Other Offeror Information (APR 2011)

(a) *Definitions.*

“Taxpayer Identification (TIN),” as used in this provision, means the number required by the Internal Revenue Service (IRS) to be used by the offeror in reporting income tax and other returns. The TIN may be either a social security number or an employer identification number.

(b) All offerors shall submit the information required in paragraphs (d) and (e) of this provision to comply with debt collection requirements of 31 U.S.C. 7701(c) and 3325(d), reporting requirements of 26 U.S.C. 6041, 6041A, and implementing regulations issued by the IRS. If the resulting contract is subject to the payment reporting requirements, the failure or refusal by the offeror to furnish the information may result in a 31 percent reduction of payments otherwise due under the contract.

(c) The TIN may be used by the government to collect and report on any delinquent amounts arising out of the offeror’s relationship with the government (31 U.S.C. 7701(c)(3)). If the resulting contract is subject to payment recording requirements, the TIN provided hereunder may be matched with IRS records to verify the accuracy of the offeror’s TIN.

(d) *Taxpayer Identification Number (TIN):* _____

- TIN has been applied for.
- TIN is not required, because:
 - Offeror is a nonresident alien, foreign corporation or foreign partnership that does not have income effectively connected with the conduct of a trade or business in the United States and does not have an office or place of business or a fiscal paying agent in the United States;
 - Offeror is an agency or instrumentality of a foreign government;
 - Offeror is an agency or instrumentality of the federal government.

(e) *Type of organization:*

- sole proprietorship;
- partnership;
- corporate entity (not tax-exempt);
- corporate entity (tax-exempt);
- government entity (federal, state or local);
- foreign government;
- international organization per 26 CFR 1.6049-4;
- other _____.

(f) *Contractor representations.*

The offeror represents as part of its offer that it is , is not, 51% owned and the management and daily operations are controlled by one or more members of the selected socio-economic group(s) below:

- Women Owned Business
- Minority Owned Business (if selected, then one sub-type is required)
 - Black American
 - Hispanic American
 - Native American (American Indians, Eskimos, Aleuts, or Native Hawaiians)
 - Asian-Pacific American (persons with origins from Burma, Thailand, Malaysia, Indonesia, Korea, The Philippines, U.S. Trust Territory of the Pacific Islands (Republic of Palau), Republic of the Marshall Islands, Federated States of Micronesia, the Commonwealth of the Northern Mariana Islands, Guam, Samoa, Macao, Hong Kong, Fiji, Tonga, Kiribati, Tuvalu, or Nauru)
 - Subcontinent Asian (Asian-Indian) American (persons with origins from India, Pakistan, Bangladesh, Sri Lanka, Bhutan, the Maldives Islands, or Nepal)
- Individual/concern, other than one of the preceding.

(end)

____ Provision 3-195 Exemption from Application of the Service Contract Act to Contracts for Maintenance, Calibration, or Repair of Certain Equipment – Certification (APR 2011)

(a) The offeror shall check following certification:

CERTIFICATION

The offeror does does not certify that –

- (1) the items of equipment to be serviced under this contract are used regularly for other than government purposes, and are sold or traded by the offeror (or subcontractor in the case of an exempt subcontractor) in substantial quantities to the general public in the course of normal business operations;

(2) the services will be furnished at prices which are, or are based on, established catalog or market prices for the maintenance, calibration, or repair of equipment.

(i) An "established catalog price" is a price included in a catalog, price list, schedule, or other form that is regularly maintained by the manufacturer or the offeror, is either published or otherwise available for inspection by customers, and states prices at which sales currently, or were last, made to a significant number of buyers constituting the general public.

(ii) An "established market price" is a current price, established in the usual course of trade between buyers and sellers free to bargain, which can be substantiated from sources independent of the manufacturer or contractor; and

(3) the compensation (wage and fringe benefits) plan for all service employees performing work under the contract is the same as that used for these employees and equivalent employees servicing the same equipment of commercial customers.

(b) Certification by the offeror as to its compliance with respect to the contract also constitutes its certification as to compliance by its subcontractor if it subcontracts out the exempt services. If the offeror certifies to the conditions in paragraph (a) of this provision then [Clause 3-160, Service Contract Act of 1965](#), will not be included in any resultant contract to this offeror.

(c) If the offeror does not certify to the conditions in paragraph (a) of this provision –

(1) [Clause 3-215, Exemption from Application of the Service Contract Act to Contracts for Maintenance, Calibration, or Repair of Certain Equipment – Requirements](#), will not be included in any resultant contract awarded to this offeror; and

(2) the offeror shall notify the contracting officer as soon as possible, if the contracting officer did not attach a Service Contract Act wage determination to the solicitation.

(d) The contracting officer may not make an award to the offeror, if the offeror fails to execute the certification in paragraph (a) of this provision or to contact the contracting officer as required in paragraph (c) of this provision.

(end)

____ Provision 3-220 Exemption from Application of the Service Contract Act to Contracts for Certain Services – Certification (APR 2011)

(a) The offeror shall check following certification:

CERTIFICATION

The offeror [] does [] does not certify that –

(1) The services under the contract are offered and sold regularly to non-Governmental customers, and are provided by the offeror (or subcontractor in the case of an exempt subcontract) to the general public in substantial quantities in the course of normal business operations;

(2) The contract services are furnished at prices that are, or are based on, established catalog or market prices. An "established catalog price" is a price included in a catalog, price list, schedule, or other form that is regularly maintained by the manufacturer or the offeror, is either published or otherwise available for inspection by customers, and states prices at which sales currently, or were last, made to a significant number of buyers constituting the general public. An "established market price" is a current price, established in the usual course of ordinary and usual trade between buyers and sellers free to bargain, which can be substantiated from sources independent of the manufacturer or offeror;

- (3) Each service employee who will perform the services under the contract will spend only a small portion of his or her time (a monthly average of less than 20 percent of the available hours on an annualized basis, or less than 20 percent of available hours during the contract period if the contract period is less than a month) servicing the Government contract; and
- (4) The offeror uses the same compensation (wage and fringe benefits) plan for all service employees performing work under the contract as the offeror uses for these employees and for equivalent employees servicing commercial customers.
- (b) Certification by the offeror as to its compliance with respect to the contract also constitutes its certification as to compliance by its subcontractor if it subcontracts out the exempt services. If the offeror certifies to the conditions in paragraph (a) of this provision then [Clause 3-160, Service Contract Act of 1965](#), as amended, will not be included in any resultant contract to this offeror.
- (c) If the offeror does not certify to the conditions in paragraph (a) of this provision—
- (1) [Clause 3-225, Exemption from Application of the Service Contract Act to Contracts for Certain Services – Requirements](#), will not be included in any resultant contract to this offeror; and
- (2) The offeror shall notify the contracting officer as soon as possible if the contracting officer did not attach a Service Contract Act wage determination to the solicitation.
- (d) The contracting officer may not make an award to the offeror, if the offeror fails to execute the certification in paragraph (a) of this provision or to contact the Contracting Officer as required in paragraph (c) of this provision.

(end)

(The contracting officer may incorporate additional clauses or provisions – by reference or in full text – in the appropriate places of the above template. Refer to the Guide to Judiciary Policy, Vol 14, Chapter 1, [Appx 1B](#), to determine if the provision or clause is authorized to be incorporated by reference(IBR) or must be included in full text. If any provisions are incorporated by reference, Provision B-1 also must be marked as applicable. Use of certain clauses/provisions may require a one-time delegation of procurement authority.)

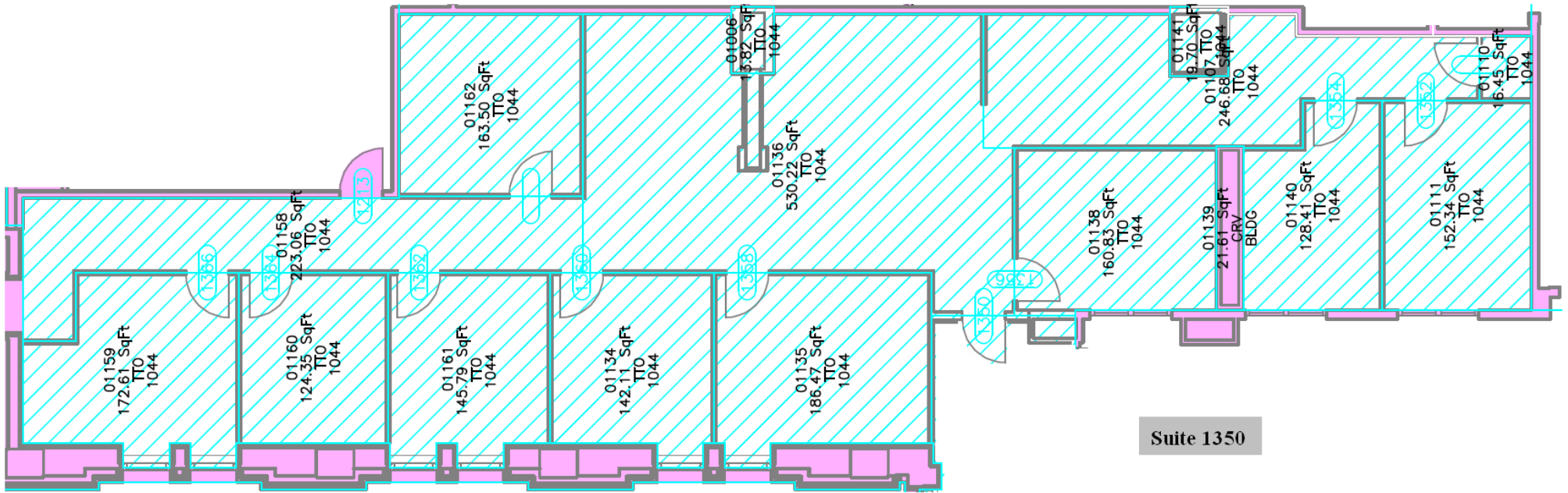
U.S. District Court - D.C. Circuit
 RFQ 16-020
 Request for Quote

Title: Carpet and Paint - Suites 1350, 1724, and 1722
 Issued: 9/27/2016

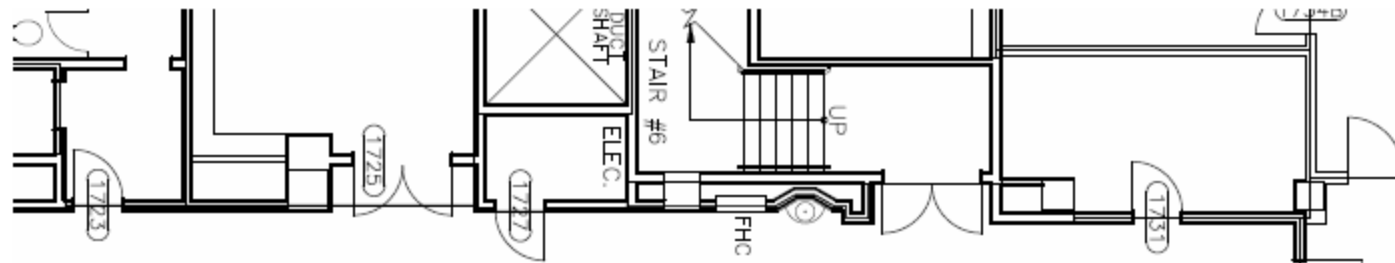
Scope:

1	Paint- Repair all walls where necessary; prime and paint walls, plaster ceilings and door trim (2 coats), color: TBD
2	Carpet - remove all existing carpet tile and replace with new carpet tile; Carpet selection: Bentley Modern Block 8MK28 - Color: Slate Roof 801079 - Style No. 8MK280220T 24" x 24" Tile w/ attached padding; Note- This carpet tile has a pattern and will should be installed to maintain pattern
3	Floor plans for each suite indicates areas to be painted and carpeted
	Move all furniture as necessary to complete painting and carpet installation
	Contractor must come onsite to take measurements (measurements on the drawing may or may not be accurate).
	Work done outside of normal working hours Monday through Friday, from 6:30 p.m. to 6:00 a.m. and weekends
	Contractor to submit name, date of birth, and social security number of all workers that will be working on site for this work scope. Submit information after being notified that the proposal has been accepted by the courts. A background check will be performed against the information provided. A purchase order will be issued upon notification that workers are suitable to work, unescorted, in the courthouse. Should it be determine that workers are not suitable a purchase order will not be issued. In this event, an explanation will not be provided; all decisions are final. Not applicable to workers who have already been cleared to work in the building in the preceding six months.
	Contractor shall take all necessary steps to protect the existing space, typically including plastic protection over nearby surfaces (carpet, millwork, etc.). Contractor shall move furniture and equipment as necessary to complete work. The courts shall move computers, phones, and electronic equipment as necessary.
	The contractor shall follow all relevant OSHA requirements. Safety glasses, long pants, short-sleeve shirts (as a minimum) and appropriate footwear shall be worn at all times
	Contractors shall work in assigned space only. Contact Ernest Gambrill or De'Ron Graves for escorted access to and from the work location.
	Provide quote by 5 PM, September 29, 2016.
	Coordinate with De'Ron Graves or Ernest Gambrill III
Terms:	Completion date: TBD

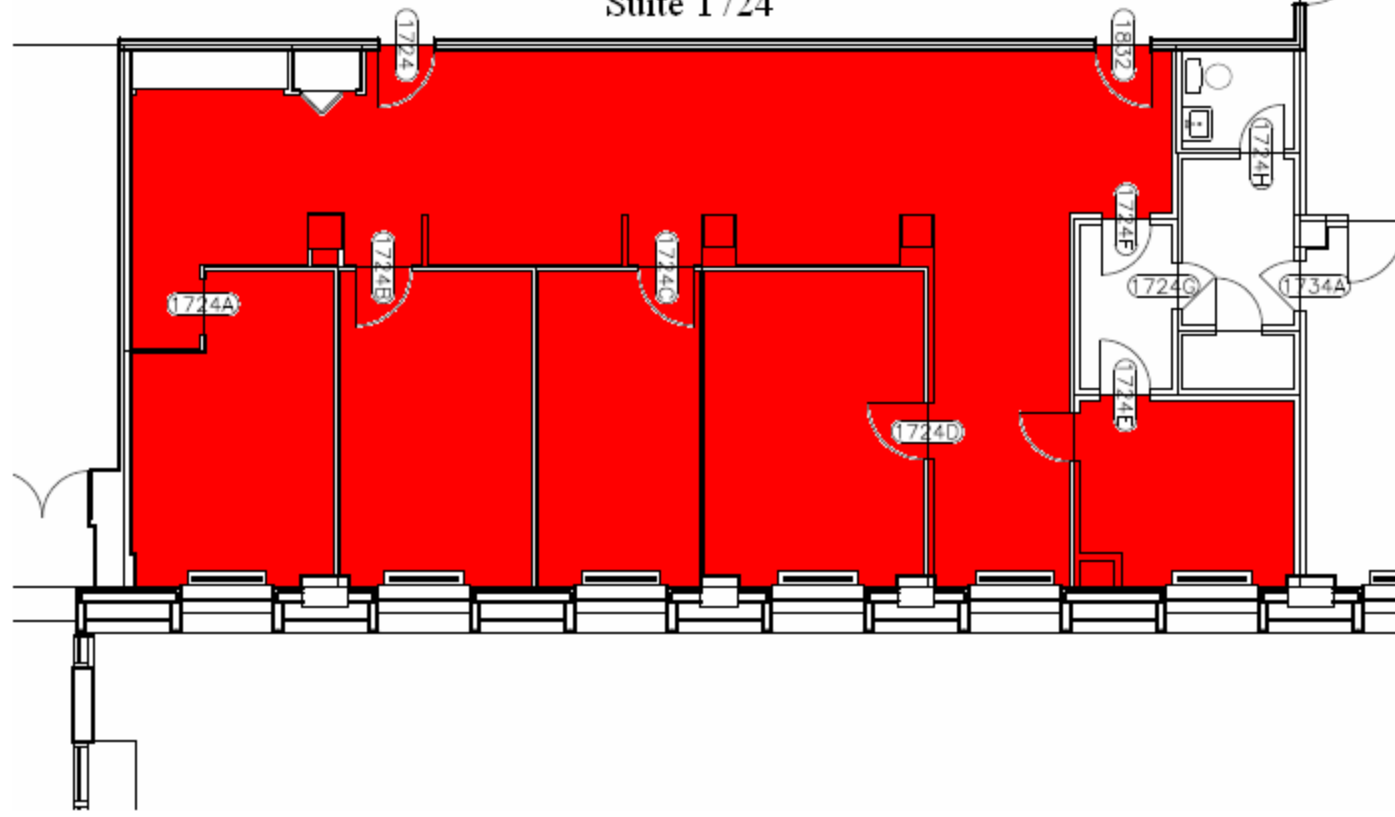
* Please direct any questions to **De'Ron Graves** at 202.297.2402 or deron_graves@dcd.uscourts.gov or **Ernest Gambrill** at 202.359.7320 or ernest_gambrill@dcd.uscourts.gov



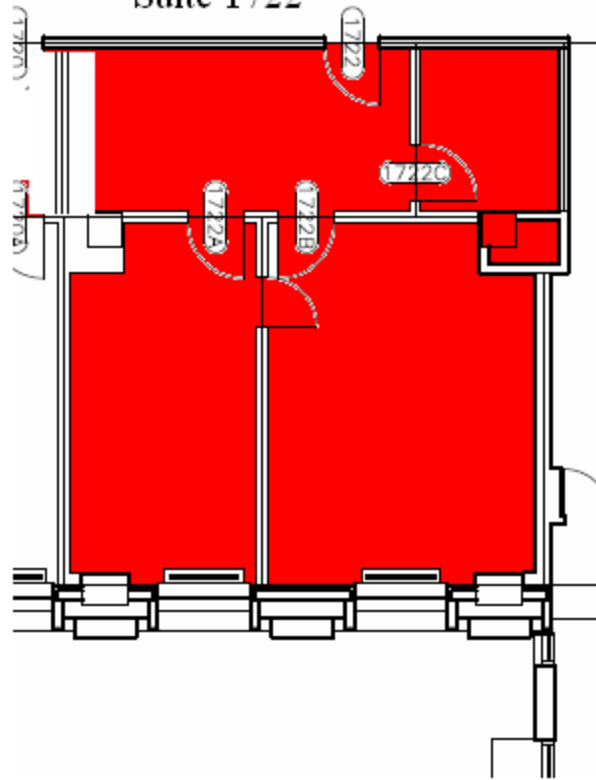
Suite 1350



Suite 1724



Suite 1722



WD 15-4282 (Rev.-3) was first posted on www.wdol.gov on 04/19/2016

REGISTER OF WAGE DETERMINATIONS UNDER | U.S. DEPARTMENT OF LABOR
THE SERVICE CONTRACT ACT | EMPLOYMENT STANDARDS ADMINISTRATION
By direction of the Secretary of Labor | WAGE AND HOUR DIVISION
WASHINGTON D.C. 20210

Wage Determination No.: 2015-4282
Daniel W. Simms Division of | Revision No.: 3
Director Wage Determinations | Date Of Revision: 04/08/2016

Note: Under Executive Order (EO) 13658, an hourly minimum wage of \$10.15 for calendar year 2016 applies to all contracts subject to the Service Contract Act for which the solicitation was issued on or after January 1, 2015. If this contract is covered by the EO, the contractor must pay all workers in any classification listed on this wage determination at least \$10.15 per hour (or the applicable wage rate listed on this wage determination, if it is higher) for all hours spent performing on the contract in calendar year 2016. The EO minimum wage rate will be adjusted annually. Additional information on contractor requirements and worker protections under the EO is available at www.dol.gov/whd/govcontracts.

States: District of Columbia, Maryland, Virginia

Area: District of Columbia Statewide
Maryland Counties of Calvert, Charles, Prince George's
Virginia Counties of Alexandria, Arlington, Fairfax, Falls Church, Fauquier, Loudoun, Prince William, Stafford

Fringe Benefits Required Follow the Occupational Listing

OCCUPATION CODE - TITLE	FOOTNOTE	RATE
01000 - Administrative Support And Clerical Occupations		
01011 - Accounting Clerk I	16.59	
01012 - Accounting Clerk II	18.61	
01013 - Accounting Clerk III	22.30	
01020 - Administrative Assistant	31.41	
01035 - Court Reporter	21.84	
01041 - Customer Service Representative I	14.40	
01042 - Customer Service Representative II	16.18	
01043 - Customer Service Representative III	17.66	
01051 - Data Entry Operator I	14.71	
01052 - Data Entry Operator II	16.05	
01060 - Dispatcher, Motor Vehicle	18.42	
01070 - Document Preparation Clerk	14.70	
01090 - Duplicating Machine Operator	14.70	
01111 - General Clerk I	14.88	
01112 - General Clerk II	16.24	
01113 - General Clerk III	18.74	
01120 - Housing Referral Assistant	25.29	
01141 - Messenger Courier	14.98	
01191 - Order Clerk I	15.12	

01192 - Order Clerk II	16.50	
01261 - Personnel Assistant (Employment) I		18.15
01262 - Personnel Assistant (Employment) II		20.32
01263 - Personnel Assistant (Employment) III		22.65
01270 - Production Control Clerk	24.23	
01290 - Rental Clerk	16.55	
01300 - Scheduler, Maintenance	18.07	
01311 - Secretary I	18.07	
01312 - Secretary II	20.18	
01313 - Secretary III	25.29	
01320 - Service Order Dispatcher	16.98	
01410 - Supply Technician	31.41	
01420 - Survey Worker	20.03	
01460 - Switchboard Operator/Receptionist		14.43
01531 - Travel Clerk I	13.46	
01532 - Travel Clerk II	14.46	
01533 - Travel Clerk III	15.53	
01611 - Word Processor I	15.63	
01612 - Word Processor II	17.67	
01613 - Word Processor III	19.95	
05000 - Automotive Service Occupations		
05005 - Automobile Body Repairer, Fiberglass		27.70
05010 - Automotive Electrician	23.51	
05040 - Automotive Glass Installer	22.15	
05070 - Automotive Worker	22.15	
05110 - Mobile Equipment Servicer	19.04	
05130 - Motor Equipment Metal Mechanic		24.78
05160 - Motor Equipment Metal Worker		22.15
05190 - Motor Vehicle Mechanic	24.78	
05220 - Motor Vehicle Mechanic Helper	18.49	
05250 - Motor Vehicle Upholstery Worker		21.63
05280 - Motor Vehicle Wrecker	22.15	
05310 - Painter, Automotive	23.51	
05340 - Radiator Repair Specialist	22.15	
05370 - Tire Repairer	14.44	
05400 - Transmission Repair Specialist		24.78
07000 - Food Preparation And Service Occupations		
07010 - Baker	14.14	
07041 - Cook I	13.81	
07042 - Cook II	16.06	
07070 - Dishwasher	10.11	
07130 - Food Service Worker	10.66	
07210 - Meat Cutter	19.19	
07260 - Waiter/Waitress	9.70	
09000 - Furniture Maintenance And Repair Occupations		
09010 - Electrostatic Spray Painter	19.86	
09040 - Furniture Handler	14.06	
09080 - Furniture Refinisher	20.23	
09090 - Furniture Refinisher Helper	15.52	
09110 - Furniture Repairer, Minor	17.94	
09130 - Upholsterer	19.86	
11000 - General Services And Support Occupations		
11030 - Cleaner, Vehicles	10.54	
11060 - Elevator Operator	11.59	

11090 - Gardener	17.52
11122 - Housekeeping Aide	12.23
11150 - Janitor	12.23
11210 - Laborer, Grounds Maintenance	13.07
11240 - Maid or Houseman	11.40
11260 - Pruner	11.58
11270 - Tractor Operator	16.04
11330 - Trail Maintenance Worker	13.07
11360 - Window Cleaner	13.80
12000 - Health Occupations	
12010 - Ambulance Driver	21.63
12011 - Breath Alcohol Technician	21.35
12012 - Certified Occupational Therapist Assistant	25.42
12015 - Certified Physical Therapist Assistant	23.57
12020 - Dental Assistant	17.98
12025 - Dental Hygienist	44.75
12030 - EKG Technician	30.44
12035 - Electroneurodiagnostic Technologist	30.44
12040 - Emergency Medical Technician	21.63
12071 - Licensed Practical Nurse I	19.07
12072 - Licensed Practical Nurse II	21.35
12073 - Licensed Practical Nurse III	24.13
12100 - Medical Assistant	16.36
12130 - Medical Laboratory Technician	18.08
12160 - Medical Record Clerk	18.80
12190 - Medical Record Technician	21.04
12195 - Medical Transcriptionist	20.12
12210 - Nuclear Medicine Technologist	37.60
12221 - Nursing Assistant I	11.74
12222 - Nursing Assistant II	13.19
12223 - Nursing Assistant III	14.40
12224 - Nursing Assistant IV	16.16
12235 - Optical Dispenser	20.17
12236 - Optical Technician	17.38
12250 - Pharmacy Technician	18.12
12280 - Phlebotomist	17.18
12305 - Radiologic Technologist	32.31
12311 - Registered Nurse I	27.64
12312 - Registered Nurse II	33.44
12313 - Registered Nurse II, Specialist	33.44
12314 - Registered Nurse III	40.13
12315 - Registered Nurse III, Anesthetist	40.13
12316 - Registered Nurse IV	48.10
12317 - Scheduler (Drug and Alcohol Testing)	23.90
12320 - Substance Abuse Treatment Counselor	27.04
13000 - Information And Arts Occupations	
13011 - Exhibits Specialist I	21.37
13012 - Exhibits Specialist II	26.46
13013 - Exhibits Specialist III	32.37
13041 - Illustrator I	20.48
13042 - Illustrator II	25.38
13043 - Illustrator III	31.03
13047 - Librarian	36.09
13050 - Library Aide/Clerk	14.86

13054 - Library Information Technology Systems Administrator	32.58
13058 - Library Technician	20.09
13061 - Media Specialist I	20.60
13062 - Media Specialist II	23.05
13063 - Media Specialist III	25.70
13071 - Photographer I	16.65
13072 - Photographer II	18.90
13073 - Photographer III	23.67
13074 - Photographer IV	28.65
13075 - Photographer V	33.76
13090 - Technical Order Library Clerk	18.67
13110 - Video Teleconference Technician	21.25
14000 - Information Technology Occupations	
14041 - Computer Operator I	18.92
14042 - Computer Operator II	21.18
14043 - Computer Operator III	23.60
14044 - Computer Operator IV	26.22
14045 - Computer Operator V	29.05
14071 - Computer Programmer I (see 1)	26.36
14072 - Computer Programmer II (see 1)	
14073 - Computer Programmer III (see 1)	
14074 - Computer Programmer IV (see 1)	
14101 - Computer Systems Analyst I (see 1)	
14102 - Computer Systems Analyst II (see 1)	
14103 - Computer Systems Analyst III (see 1)	
14150 - Peripheral Equipment Operator	18.92
14160 - Personal Computer Support Technician	26.22
14170 - System Support Specialist	36.86
15000 - Instructional Occupations	
15010 - Aircrew Training Devices Instructor (Non-Rated)	36.47
15020 - Aircrew Training Devices Instructor (Rated)	44.06
15030 - Air Crew Training Devices Instructor (Pilot)	52.81
15050 - Computer Based Training Specialist / Instructor	36.47
15060 - Educational Technologist	35.31
15070 - Flight Instructor (Pilot)	52.81
15080 - Graphic Artist	29.48
15085 - Maintenance Test Pilot, Fixed, Jet/Prop	48.72
15086 - Maintenance Test Pilot, Rotary Wing	48.72
15088 - Non-Maintenance Test/Co-Pilot	48.72
15090 - Technical Instructor	27.59
15095 - Technical Instructor/Course Developer	33.74
15110 - Test Proctor	22.22
15120 - Tutor	22.22
16000 - Laundry, Dry-Cleaning, Pressing And Related Occupations	
16010 - Assembler	10.37
16030 - Counter Attendant	10.37
16040 - Dry Cleaner	13.33
16070 - Finisher, Flatwork, Machine	10.37
16090 - Presser, Hand	10.37
16110 - Presser, Machine, Drycleaning	10.37
16130 - Presser, Machine, Shirts	10.37
16160 - Presser, Machine, Wearing Apparel, Laundry	10.37
16190 - Sewing Machine Operator	14.28

16220 - Tailor	15.13	
16250 - Washer, Machine	11.37	
19000 - Machine Tool Operation And Repair Occupations		
19010 - Machine-Tool Operator (Tool Room)		23.25
19040 - Tool And Die Maker	25.72	
21000 - Materials Handling And Packing Occupations		
21020 - Forklift Operator	18.02	
21030 - Material Coordinator	24.23	
21040 - Material Expediter	24.23	
21050 - Material Handling Laborer	13.83	
21071 - Order Filler	15.09	
21080 - Production Line Worker (Food Processing)		18.02
21110 - Shipping Packer	16.20	
21130 - Shipping/Receiving Clerk	16.20	
21140 - Store Worker I	11.96	
21150 - Stock Clerk	17.21	
21210 - Tools And Parts Attendant	18.02	
21410 - Warehouse Specialist	18.02	
23000 - Mechanics And Maintenance And Repair Occupations		
23010 - Aerospace Structural Welder	29.93	
23019 - Aircraft Logs and Records Technician		21.74
23021 - Aircraft Mechanic I	28.41	
23022 - Aircraft Mechanic II	29.93	
23023 - Aircraft Mechanic III	31.38	
23040 - Aircraft Mechanic Helper	19.29	
23050 - Aircraft, Painter	27.20	
23060 - Aircraft Servicer	21.74	
23070 - Aircraft Survival Flight Equipment Technician		27.20
23080 - Aircraft Worker	23.11	
23091 - Aircrew Life Support Equipment (ALSE) Mechanic I		23.11
23092 - Aircrew Life Support Equipment (ALSE) Mechanic II		28.41
23110 - Appliance Mechanic	21.75	
23120 - Bicycle Repairer	14.43	
23125 - Cable Splicer	28.62	
23130 - Carpenter, Maintenance	21.66	
23140 - Carpet Layer	20.49	
23160 - Electrician, Maintenance	27.98	
23181 - Electronics Technician Maintenance I		27.43
23182 - Electronics Technician Maintenance II		29.12
23183 - Electronics Technician Maintenance III		30.68
23260 - Fabric Worker	21.04	
23290 - Fire Alarm System Mechanic		22.91
23310 - Fire Extinguisher Repairer	19.38	
23311 - Fuel Distribution System Mechanic		25.09
23312 - Fuel Distribution System Operator		21.32
23370 - General Maintenance Worker		21.43
23380 - Ground Support Equipment Mechanic		28.41
23381 - Ground Support Equipment Servicer		21.74
23382 - Ground Support Equipment Worker		23.11
23391 - Gunsmith I	19.38	
23392 - Gunsmith II	22.54	
23393 - Gunsmith III	25.20	

23410 - Heating, Ventilation And Air-Conditioning Mechanic	26.28
23411 - Heating, Ventilation And Air Contditioning Mechanic (Research Facility)	27.69
23430 - Heavy Equipment Mechanic	24.16
23440 - Heavy Equipment Operator	22.91
23460 - Instrument Mechanic	24.85
23465 - Laboratory/Shelter Mechanic	23.93
23470 - Laborer	14.98
23510 - Locksmith	23.21
23530 - Machinery Maintenance Mechanic	25.43
23550 - Machinist, Maintenance	24.69
23580 - Maintenance Trades Helper	18.27
23591 - Metrology Technician I	24.85
23592 - Metrology Technician II	26.18
23593 - Metrology Technician III	27.46
23640 - Millwright	28.19
23710 - Office Appliance Repairer	22.96
23760 - Painter, Maintenance	21.75
23790 - Pipefitter, Maintenance	25.89
23810 - Plumber, Maintenance	24.52
23820 - Pneudraulic Systems Mechanic	25.20
23850 - Rigger	25.20
23870 - Scale Mechanic	22.54
23890 - Sheet-Metal Worker, Maintenance	22.91
23910 - Small Engine Mechanic	20.49
23931 - Telecommunications Mechanic I	29.95
23932 - Telecommunications Mechanic II	31.55
23950 - Telephone Lineman	30.15
23960 - Welder, Combination, Maintenance	22.91
23965 - Well Driller	22.91
23970 - Woodcraft Worker	25.20
23980 - Woodworker	19.38
24000 - Personal Needs Occupations	
24550 - Case Manager	17.64
24570 - Child Care Attendant	12.79
24580 - Child Care Center Clerk	17.77
24610 - Chore Aide	10.86
24620 - Family Readiness And Support Services Coordinator	17.64
24630 - Homemaker	18.43
25000 - Plant And System Operations Occupations	
25010 - Boiler Tender	30.03
25040 - Sewage Plant Operator	22.92
25070 - Stationary Engineer	30.03
25190 - Ventilation Equipment Tender	21.44
25210 - Water Treatment Plant Operator	22.92
27000 - Protective Service Occupations	
27004 - Alarm Monitor	21.91
27007 - Baggage Inspector	13.98
27008 - Corrections Officer	25.08
27010 - Court Security Officer	26.37
27030 - Detection Dog Handler	20.57
27040 - Detention Officer	25.08

27070 - Firefighter	26.52	
27101 - Guard I	13.98	
27102 - Guard II	20.57	
27131 - Police Officer I	28.19	
27132 - Police Officer II	31.32	
28000 - Recreation Occupations		
28041 - Carnival Equipment Operator	13.59	
28042 - Carnival Equipment Repairer	14.63	
28043 - Carnival Worker	9.24	
28210 - Gate Attendant/Gate Tender	14.31	
28310 - Lifeguard	11.59	
28350 - Park Attendant (Aide)	16.02	
28510 - Recreation Aide/Health Facility Attendant		11.68
28515 - Recreation Specialist	19.84	
28630 - Sports Official	12.75	
28690 - Swimming Pool Operator	18.21	
29000 - Stevedoring/Longshoremen Occupational Services		
29010 - Blocker And Bracer	25.44	
29020 - Hatch Tender	25.44	
29030 - Line Handler	25.44	
29041 - Stevedore I	23.44	
29042 - Stevedore II	26.66	
30000 - Technical Occupations		
30010 - Air Traffic Control Specialist, Center (HFO) (see 2)		39.92
30011 - Air Traffic Control Specialist, Station (HFO) (see 2)		27.38
30012 - Air Traffic Control Specialist, Terminal (HFO) (see 2)		30.16
30021 - Archeological Technician I	20.19	
30022 - Archeological Technician II	22.60	
30023 - Archeological Technician III	27.98	
30030 - Cartographic Technician	27.98	
30040 - Civil Engineering Technician	26.41	
30051 - Cryogenic Technician I	24.48	
30052 - Cryogenic Technician II	27.04	
30061 - Drafter/CAD Operator I	20.19	
30062 - Drafter/CAD Operator II	22.60	
30063 - Drafter/CAD Operator III	25.19	
30064 - Drafter/CAD Operator IV	31.00	
30081 - Engineering Technician I	22.92	
30082 - Engineering Technician II	25.72	
30083 - Engineering Technician III	28.79	
30084 - Engineering Technician IV	35.64	
30085 - Engineering Technician V	43.61	
30086 - Engineering Technician VI	52.76	
30090 - Environmental Technician	27.41	
30095 - Evidence Control Specialist	22.10	
30210 - Laboratory Technician	23.38	
30221 - Latent Fingerprint Technician I	31.51	
30222 - Latent Fingerprint Technician II	34.81	
30240 - Mathematical Technician	28.94	
30361 - Paralegal/Legal Assistant I	21.36	
30362 - Paralegal/Legal Assistant II	26.47	
30363 - Paralegal/Legal Assistant III	32.36	
30364 - Paralegal/Legal Assistant IV	39.16	
30375 - Petroleum Supply Specialist	27.04	

30390 - Photo-Optics Technician	27.98	
30395 - Radiation Control Technician	27.04	
30461 - Technical Writer I	24.12	
30462 - Technical Writer II	29.52	
30463 - Technical Writer III	35.72	
30491 - Unexploded Ordnance (UXO) Technician I		25.24
30492 - Unexploded Ordnance (UXO) Technician II		30.53
30493 - Unexploded Ordnance (UXO) Technician III		36.60
30494 - Unexploded (UXO) Safety Escort		25.24
30495 - Unexploded (UXO) Sweep Personnel		25.24
30501 - Weather Forecaster I	24.48	
30502 - Weather Forecaster II	29.77	
30620 - Weather Observer, Combined Upper Air Or Surface Programs	(see 2)	25.19
30621 - Weather Observer, Senior	(see 2)	27.98
31000 - Transportation/Mobile Equipment Operation Occupations		
31010 - Airplane Pilot	30.53	
31020 - Bus Aide	14.32	
31030 - Bus Driver	20.85	
31043 - Driver Courier	15.38	
31260 - Parking and Lot Attendant	10.07	
31290 - Shuttle Bus Driver	16.83	
31310 - Taxi Driver	13.98	
31361 - Truckdriver, Light	16.83	
31362 - Truckdriver, Medium	18.28	
31363 - Truckdriver, Heavy	19.96	
31364 - Truckdriver, Tractor-Trailer	19.96	
99000 - Miscellaneous Occupations		
99020 - Cabin Safety Specialist	14.89	
99030 - Cashier	10.03	
99050 - Desk Clerk	12.08	
99095 - Embalmer	25.36	
99130 - Flight Follower	25.24	
99251 - Laboratory Animal Caretaker I		12.43
99252 - Laboratory Animal Caretaker II		13.59
99260 - Marketing Analyst	33.51	
99310 - Mortician	34.10	
99410 - Pest Controller	17.69	
99510 - Photofinishing Worker	13.20	
99710 - Recycling Laborer	19.20	
99711 - Recycling Specialist	23.54	
99730 - Refuse Collector	17.01	
99810 - Sales Clerk	12.09	
99820 - School Crossing Guard	14.77	
99830 - Survey Party Chief	23.14	
99831 - Surveying Aide	14.38	
99832 - Surveying Technician	21.99	
99840 - Vending Machine Attendant	15.48	
99841 - Vending Machine Repairer	19.67	
99842 - Vending Machine Repairer Helper	15.48	

ALL OCCUPATIONS LISTED ABOVE RECEIVE THE FOLLOWING BENEFITS:

HEALTH & WELFARE: Life, accident, and health insurance plans, sick leave, pension plans, civic and personal leave, severance pay, and savings and thrift plans. Minimum employer contributions costing an average of \$4.27 per hour computed on the basis of all hours worked by service employees employed on the contract.

VACATION: 2 weeks paid vacation after 1 year of service with a contractor or successor, 3 weeks after 5 years, and 4 weeks after 15 years. Length of service includes the whole span of continuous service with the present contractor or successor, wherever employed, and with the predecessor contractors in the performance of similar work at the same Federal facility. (Reg. 29 CFR 4.173)

HOLIDAYS: A minimum of ten paid holidays per year: New Year's Day, Martin Luther King Jr.'s Birthday, Washington's Birthday, Memorial Day, Independence Day, Labor Day, Columbus Day, Veterans' Day, Thanksgiving Day, and Christmas Day. (A contractor may substitute for any of the named holidays another day off with pay in accordance with a plan communicated to the employees involved.) (See 29 CFR 4.174)

THE OCCUPATIONS WHICH HAVE NUMBERED FOOTNOTES IN PARENTHESES RECEIVE THE FOLLOWING:

1) **COMPUTER EMPLOYEES:** Under the SCA at section 8(b), this wage determination does not apply to any employee who individually qualifies as a bona fide executive, administrative, or professional employee as defined in 29 C.F.R. Part 541. Because most Computer System Analysts and Computer Programmers who are compensated at a rate not less than \$27.63 (or on a salary or fee basis at a rate not less than \$455 per week) an hour would likely qualify as exempt computer professionals, (29 C.F.R. 541.400) wage rates may not be listed on this wage determination for all occupations within those job families. In addition, because this wage determination may not list a wage rate for some or all occupations within those job families if the survey data indicates that the prevailing wage rate for the occupation equals or exceeds \$27.63 per hour conformances may be necessary for certain nonexempt employees. For example, if an individual employee is nonexempt but nevertheless performs duties within the scope of one of the Computer Systems Analyst or Computer Programmer occupations for which this wage determination does not specify an SCA wage rate, then the wage rate for that employee must be conformed in accordance with the conformance procedures described in the conformance note included on this wage determination.

Additionally, because job titles vary widely and change quickly in the computer industry, job titles are not determinative of the application of the computer professional exemption. Therefore, the exemption applies only to computer employees who satisfy the compensation requirements and whose primary duty consists of:

- (1) The application of systems analysis techniques and procedures, including consulting with users, to determine hardware, software or system functional specifications;
- (2) The design, development, documentation, analysis, creation, testing or modification of computer systems or programs, including prototypes, based on and related to user or system design specifications;

(3) The design, documentation, testing, creation or modification of computer programs related to machine operating systems; or

(4) A combination of the aforementioned duties, the performance of which requires the same level of skills. (29 C.F.R. 541.400).

2) AIR TRAFFIC CONTROLLERS AND WEATHER OBSERVERS - NIGHT PAY & SUNDAY PAY: If you work at night as part of a regular tour of duty, you will earn a night differential and receive an additional 10% of basic pay for any hours worked between 6pm and 6am.

If you are a full-time employed (40 hours a week) and Sunday is part of your regularly scheduled workweek, you are paid at your rate of basic pay plus a Sunday premium of 25% of your basic rate for each hour of Sunday work which is not overtime (i.e. occasional work on Sunday outside the normal tour of duty is considered overtime work).

**** HAZARDOUS PAY DIFFERENTIAL ****

An 8 percent differential is applicable to employees employed in a position that represents a high degree of hazard when working with or in close proximity to ordnance, explosives, and incendiary materials. This includes work such as screening, blending, dying, mixing, and pressing of sensitive ordnance, explosives, and pyrotechnic compositions such as lead azide, black powder and photoflash powder.

All dry-house activities involving propellants or explosives. Demilitarization, modification, renovation, demolition, and maintenance operations on sensitive ordnance, explosives and incendiary materials. All operations involving re-grading and cleaning of artillery ranges.

A 4 percent differential is applicable to employees employed in a position that represents a low degree of hazard when working with, or in close proximity to ordnance, (or employees possibly adjacent to) explosives and incendiary materials which involves potential injury such as laceration of hands, face, or arms of the employee engaged in the operation, irritation of the skin, minor burns and the like; minimal damage to immediate or adjacent work area or equipment being used. All operations involving, unloading, storage, and hauling of ordnance, explosive, and incendiary ordnance material other than small arms ammunition. These differentials are only applicable to work that has been specifically designated by the agency for ordnance, explosives, and incendiary material differential pay.

**** UNIFORM ALLOWANCE ****

If employees are required to wear uniforms in the performance of this contract (either by the terms of the Government contract, by the employer, by the state or local law, etc.), the cost of furnishing such uniforms and maintaining (by laundering or dry cleaning) such uniforms is an expense that may not be borne by an employee where such cost reduces the hourly rate below that required by the wage determination. The Department of Labor will accept payment in accordance with the following standards as compliance:

The contractor or subcontractor is required to furnish all employees with an adequate number of uniforms without cost or to reimburse employees for the actual cost of the uniforms. In addition, where uniform cleaning and maintenance is made the responsibility of the employee, all contractors and subcontractors subject to this wage determination shall (in the absence of a bona fide collective bargaining agreement providing for a different amount, or the furnishing of contrary

affirmative proof as to the actual cost), reimburse all employees for such cleaning and maintenance at a rate of \$3.35 per week (or \$.67 cents per day). However, in those instances where the uniforms furnished are made of "wash and wear" materials, may be routinely washed and dried with other personal garments, and do not require any special treatment such as dry cleaning, daily washing, or commercial laundering in order to meet the cleanliness or appearance standards set by the terms of the Government contract, by the contractor, by law, or by the nature of the work, there is no requirement that employees be reimbursed for uniform maintenance costs.

**** SERVICE CONTRACT ACT DIRECTORY OF OCCUPATIONS ****

The duties of employees under job titles listed are those described in the "Service Contract Act Directory of Occupations", Fifth Edition (Revision 1), dated September 2015, unless otherwise indicated.

**** REQUEST FOR AUTHORIZATION OF ADDITIONAL CLASSIFICATION AND WAGE RATE, Standard Form 1444 (SF-1444) ****

Conformance Process:

The contracting officer shall require that any class of service employee which is not listed herein and which is to be employed under the contract (i.e., the work to be performed is not performed by any classification listed in the wage determination), be classified by the contractor so as to provide a reasonable relationship (i.e., appropriate level of skill comparison) between such unlisted classifications and the classifications listed in the wage determination (See 29 CFR 4.6(b)(2)(i)). Such conforming procedures shall be initiated by the contractor prior to the performance of contract work by such unlisted class(es) of employees (See 29 CFR 4.6(b)(2)(ii)). The Wage and Hour Division shall make a final determination of conformed classification, wage rate, and/or fringe benefits which shall be paid to all employees performing in the classification from the first day of work on which contract work is performed by them in the classification. Failure to pay such unlisted employees the compensation agreed upon by the interested parties and/or fully determined by the Wage and Hour Division retroactive to the date such class of employees commenced contract work shall be a violation of the Act and this contract. (See 29 CFR 4.6(b)(2)(v)). When multiple wage determinations are included in a contract, a separate SF-1444 should be prepared for each wage determination to which a class(es) is to be conformed.

The process for preparing a conformance request is as follows:

- 1) When preparing the bid, the contractor identifies the need for a conformed occupation(s) and computes a proposed rate(s).
- 2) After contract award, the contractor prepares a written report listing in order the proposed classification title(s), a Federal grade equivalency (FGE) for each proposed classification(s), job description(s), and rationale for proposed wage rate(s), including information regarding the agreement or disagreement of the authorized representative of the employees involved, or where there is no authorized representative, the employees themselves. This report should be submitted to the contracting officer no later than 30 days after such unlisted class(es) of employees performs any contract work.
- 3) The contracting officer reviews the proposed action and promptly submits a report

of the action, together with the agency's recommendations and pertinent information including the position of the contractor and the employees, to the U.S. Department of Labor, Wage and Hour Division, for review (See 29 CFR 4.6(b)(2)(ii)).

4) Within 30 days of receipt, the Wage and Hour Division approves, modifies, or disapproves the action via transmittal to the agency contracting officer, or notifies the contracting officer that additional time will be required to process the request.

5) The contracting officer transmits the Wage and Hour Division's decision to the contractor.

6) Each affected employee shall be furnished by the contractor with a written copy of such determination or it shall be posted as a part of the wage determination (See 29 CFR 4.6(b)(2)(iii)).

Information required by the Regulations must be submitted on SF-1444 or bond paper.

When preparing a conformance request, the "Service Contract Act Directory of Occupations" should be used to compare job definitions to ensure that duties requested are not performed by a classification already listed in the wage determination. Remember, it is not the job title, but the required tasks that determine whether a class is included in an established wage determination. Conformances may not be used to artificially split, combine, or subdivide classifications listed in the wage determination (See 29 CFR 4.152(c)(1)).