

Request for Quotations (Services)
Open Market
Lowest Price, Technically Acceptable

RFQ Number: USDC RFQ 17-032

Request Date: September 23, 2017

PUBLIC NOTIFICATION: Bathrooms Cyclical Maintenance

Special Notes:

Quotes should be e-mailed or hand delivered to the below listed address by **(12:00 Noon on Thursday, September 28, 2017)** local time. Hand carried quotes must be delivered by the same time at (333 Constitution Ave., NW Ste. 1724) to (**Attention: (Ernest Gambrill)**). Submit a technical proposal describing your approach and project management in accordance with the attached statement of work. Use the attached quote sheet for a firm fixed price for job.

A firm fixed price award from this RFQ will be made based on the lowest priced, technically acceptable offer.

Requests to see the space for measurements, as well as, questions concerning this RFQ should be sent to:

Ernest Gambrill
U.S. District Court
333 Constitution Ave., NW Ste. 1724
Procurement & Facilities
(202) 354-3014 office
ernest_gambrill@dcd.uscourts.gov

Services are to be performed at: *E. Barrett Prettyman Courthouse, 333 Constitution Ave., NW Washington, DC 20001.*

Sincerely,

(Ernest Gambrill)
Contracting Officer

Attachments: Scope of Work
Wage Determination

Quote Sheet for RFQ Number: USDC RFQ 17-032

PROPOSE A FIRM FIXED PRICE FOR JOB: \$ _____

Vendor's Name

Vendor's Phone Number/fax number/e-mail address

Vendor's Street Address

Vendor's City, State, and Zip Code

Signature of Person Authorized to Sign Quote

Date

DUNS number

Printed or Typed Name of Signator

Discount Terms or Net 30?

U.S. District Court - D.C. Circuit
RFQ 17-032
Request for Quote
Cyclical Maintenance – 8 Chambers Bathrooms
9/23/2017

Bathrooms Update

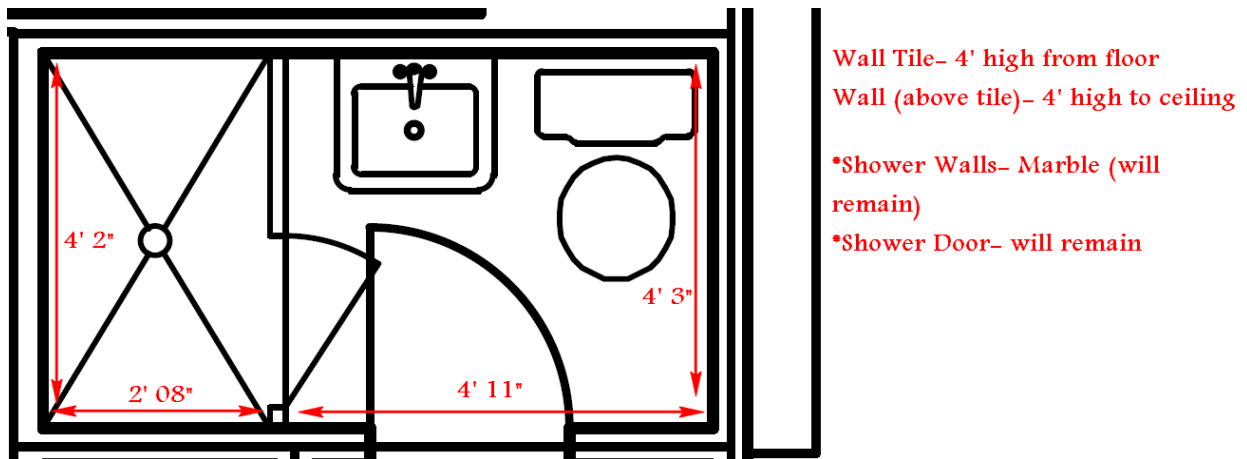
1. Bathroom – Cyclical Maintenance
 - a. Demo and dispose of all existing floor, wall, and shower floor tile
 - b. Preserve and protect marble walls, shower door and shower fixtures
 - c. Demo and dispose of all other fixtures
 - d. Patch, primer, and two coats of paint on ceiling and walls Color: Benjamin Moore OC-81 Evening White (Eggshell finish)
 - e. Install new light switch and electrical outlet covers
 - f. Replace shower floor with 658964 Oyster Polished 2”x 2” (12x12in Mosaic Sheets)
 - g. Replace shower border with Item Number 54669674300; 12x24 Elements Ash Grey Super Polished Porcelain Field Tile
 - h. Replace bathroom floor tile with: Item Number 54669674300; 12x24 Elements Ash Grey Super Polished Porcelain Field Tile
 - i. Replace wall tile with 3"x8" White Subway Tile
 - j. Bullnose (border) tile to match floor tile (Item Number 54669674300; 12x24 Elements Ash Grey Super Polished Porcelain Field Tile)
 - k. Replace vanity with Ellenbee White Integrated Single Sink Bathroom Vanity
 - l. Replace light fixture with Allen Roth Merington 9 – in vanity light bar
 - m. Replace toilet with white Kohler K-3505 toilet and tank or equivalent
 - n. Install new toilet paper dispenser, paper towel dispenser, soap dispenser, and towel bar

Provide sample tiles for approval, prior to purchasing

Terms

1. Work to be done after normal business hours on week days (5PM – 12Mid) or weekends.
2. Weekend work typically begins on Friday at 5 PM - 12 mid and continues on Saturday and Sunday during the hours of 7 AM - 4 PM.
3. Contractor to submit name, date of birth, and social security number of all workers that will be working on site for this work scope. Submit information after being notified that the proposal has been accepted by the courts. A background check will be performed against the information provided. A purchase order will be issued upon notification that workers are suitable to work, unescorted, in the courthouse. Should it be determine that workers are not suitable, a purchase order will not be issued. In this event, an explanation will not be provided; all decisions are final. Not applicable to workers who have already been cleared to work in the building in the preceding six months.

4. Contact Ernest Gambrill at 202-359-7320 to schedule a review of the space in advance of proposal submission.
5. Contractor shall take all necessary steps to protect the existing space, typically including plastic protection over nearby surfaces (carpet, millwork, etc.). Contractor shall move furniture and equipment as necessary to complete work. The courts shall move computers, phones, and electronic equipment as necessary.
6. The contractor shall follow all relevant OSHA requirements. Safety glasses, long pants, short-sleeve shirts (as a minimum) and appropriate footwear shall be worn at all times.
7. **Start and completion date: TBD (based on the availability of the chambers)**
8. * Please direct any questions to or **Ernest Gambrill** at 202.359.7320



WD 15-4281 (Rev.-7) was first posted on www.wdol.gov on 08/01/2017

REGISTER OF WAGE DETERMINATIONS UNDER
THE SERVICE CONTRACT ACT
By direction of the Secretary of Labor

U.S. DEPARTMENT OF LABOR
EMPLOYMENT STANDARDS ADMINISTRATION
WAGE AND HOUR DIVISION
WASHINGTON D.C. 20210

Daniel W. Simms Division of
Director Wage Determinations

Wage Determination No.: 2015-4281
Revision No.: 7
Date Of Revision: 07/25/2017

Note: Under Executive Order (EO) 13658, an hourly minimum wage of \$10.20 for calendar year 2017 applies to all contracts subject to the Service Contract Act for which the contract is awarded (and any solicitation was issued) on or after January 1, 2015. If this contract is covered by the EO, the contractor must pay all workers in any classification listed on this wage determination at least \$10.20 per hour (or the applicable wage rate listed on this wage determination, if it is higher) for all hours spent performing on the contract in calendar year 2017. The EO minimum wage rate will be adjusted annually. Additional information on contractor requirements and worker protections under the EO is available at www.dol.gov/whd/govcontracts.

States: District of Columbia, Maryland, Virginia

Area: District of Columbia Statewide
Maryland Counties of Calvert, Charles, Prince George's
Virginia Counties of Alexandria, Arlington, Fairfax, Falls Church, Fauquier, Loudoun, Manassas, Manassas Park, Prince William, Stafford

Fringe Benefits Required Follow the Occupational Listing

OCCUPATION CODE - TITLE	FOOTNOTE	RATE
01000 - Administrative Support And Clerical Occupations		
01011 - Accounting Clerk I		18.06
01012 - Accounting Clerk II		20.28
01013 - Accounting Clerk III		22.68
01020 - Administrative Assistant		31.98
01035 - Court Reporter		21.84
01041 - Customer Service Representative I		14.94
01042 - Customer Service Representative II		16.81
01043 - Customer Service Representative III		18.33
01051 - Data Entry Operator I		14.88
01052 - Data Entry Operator II		16.23
01060 - Dispatcher, Motor Vehicle		19.28
01070 - Document Preparation Clerk		16.17
01090 - Duplicating Machine Operator		16.17
01111 - General Clerk I		14.88
01112 - General Clerk II		16.24
01113 - General Clerk III		18.74
01120 - Housing Referral Assistant		25.29
01141 - Messenger Courier		16.18
01191 - Order Clerk I		15.12
01192 - Order Clerk II		16.50
01261 - Personnel Assistant (Employment) I		18.15
01262 - Personnel Assistant (Employment) II		20.32
01263 - Personnel Assistant (Employment) III		22.65
01270 - Production Control Clerk		25.24
01290 - Rental Clerk		16.55
01300 - Scheduler, Maintenance		18.07

01311	- Secretary I	18.07
01312	- Secretary II	20.18
01313	- Secretary III	25.29
01320	- Service Order Dispatcher	17.24
01410	- Supply Technician	31.98
01420	- Survey Worker	20.03
01460	- Switchboard Operator/Receptionist	15.07
01531	- Travel Clerk I	14.80
01532	- Travel Clerk II	15.91
01533	- Travel Clerk III	17.08
01611	- Word Processor I	16.56
01612	- Word Processor II	18.59
01613	- Word Processor III	20.79
05000	- Automotive Service Occupations	
05005	- Automobile Body Repairer, Fiberglass	28.60
05010	- Automotive Electrician	23.51
05040	- Automotive Glass Installer	22.15
05070	- Automotive Worker	22.15
05110	- Mobile Equipment Servicer	19.04
05130	- Motor Equipment Metal Mechanic	24.78
05160	- Motor Equipment Metal Worker	22.15
05190	- Motor Vehicle Mechanic	24.78
05220	- Motor Vehicle Mechanic Helper	18.49
05250	- Motor Vehicle Upholstery Worker	21.63
05280	- Motor Vehicle Wrecker	22.15
05310	- Painter, Automotive	23.51
05340	- Radiator Repair Specialist	22.15
05370	- Tire Repairer	14.44
05400	- Transmission Repair Specialist	24.78
07000	- Food Preparation And Service Occupations	
07010	- Baker	14.14
07041	- Cook I	15.15
07042	- Cook II	17.61
07070	- Dishwasher	10.72
07130	- Food Service Worker	11.01
07210	- Meat Cutter	20.10
07260	- Waiter/Waitress	10.67
09000	- Furniture Maintenance And Repair Occupations	
09010	- Electrostatic Spray Painter	19.86
09040	- Furniture Handler	14.06
09080	- Furniture Refinisher	20.23
09090	- Furniture Refinisher Helper	15.52
09110	- Furniture Repairer, Minor	17.94
09130	- Upholsterer	19.86
11000	- General Services And Support Occupations	
11030	- Cleaner, Vehicles	10.54
11060	- Elevator Operator	12.66
11090	- Gardener	18.52
11122	- Housekeeping Aide	12.66
11150	- Janitor	12.66
11210	- Laborer, Grounds Maintenance	13.82
11240	- Maid or Houseman	12.22
11260	- Pruner	12.25
11270	- Tractor Operator	16.94
11330	- Trail Maintenance Worker	13.82
11360	- Window Cleaner	14.28
12000	- Health Occupations	
12010	- Ambulance Driver	22.31
12011	- Breath Alcohol Technician	21.35
12012	- Certified Occupational Therapist Assistant	27.96
12015	- Certified Physical Therapist Assistant	25.93

12020 - Dental Assistant	19.78
12025 - Dental Hygienist	45.00
12030 - EKG Technician	33.48
12035 - Electroneurodiagnostic Technologist	33.48
12040 - Emergency Medical Technician	22.31
12071 - Licensed Practical Nurse I	19.07
12072 - Licensed Practical Nurse II	21.35
12073 - Licensed Practical Nurse III	24.13
12100 - Medical Assistant	17.17
12130 - Medical Laboratory Technician	18.98
12160 - Medical Record Clerk	18.80
12190 - Medical Record Technician	21.04
12195 - Medical Transcriptionist	20.50
12210 - Nuclear Medicine Technologist	39.16
12221 - Nursing Assistant I	11.74
12222 - Nursing Assistant II	13.19
12223 - Nursing Assistant III	14.40
12224 - Nursing Assistant IV	16.16
12235 - Optical Dispenser	20.67
12236 - Optical Technician	17.38
12250 - Pharmacy Technician	18.12
12280 - Phlebotomist	17.93
12305 - Radiologic Technologist	33.85
12311 - Registered Nurse I	27.64
12312 - Registered Nurse II	33.44
12313 - Registered Nurse II, Specialist	33.44
12314 - Registered Nurse III	40.13
12315 - Registered Nurse III, Anesthetist	40.13
12316 - Registered Nurse IV	48.10
12317 - Scheduler (Drug and Alcohol Testing)	25.90
12320 - Substance Abuse Treatment Counselor	27.04
13000 - Information And Arts Occupations	
13011 - Exhibits Specialist I	21.37
13012 - Exhibits Specialist II	26.46
13013 - Exhibits Specialist III	32.37
13041 - Illustrator I	20.48
13042 - Illustrator II	25.38
13043 - Illustrator III	31.03
13047 - Librarian	37.95
13050 - Library Aide/Clerk	16.35
13054 - Library Information Technology Systems Administrator	34.26
13058 - Library Technician	20.89
13061 - Media Specialist I	22.66
13062 - Media Specialist II	25.36
13063 - Media Specialist III	28.27
13071 - Photographer I	16.65
13072 - Photographer II	18.90
13073 - Photographer III	23.67
13074 - Photographer IV	28.65
13075 - Photographer V	33.76
13090 - Technical Order Library Clerk	20.54
13110 - Video Teleconference Technician	23.38
14000 - Information Technology Occupations	
14041 - Computer Operator I	18.92
14042 - Computer Operator II	21.18
14043 - Computer Operator III	23.60
14044 - Computer Operator IV	26.22
14045 - Computer Operator V	29.05
14071 - Computer Programmer I	(see 1) 26.36
14072 - Computer Programmer II	(see 1)

14073 - Computer Programmer III	(see 1)	
14074 - Computer Programmer IV	(see 1)	
14101 - Computer Systems Analyst I	(see 1)	
14102 - Computer Systems Analyst II	(see 1)	
14103 - Computer Systems Analyst III	(see 1)	
14150 - Peripheral Equipment Operator		18.92
14160 - Personal Computer Support Technician		26.22
14170 - System Support Specialist		37.87
15000 - Instructional Occupations		
15010 - Aircrew Training Devices Instructor (Non-Rated)		36.47
15020 - Aircrew Training Devices Instructor (Rated)		44.06
15030 - Air Crew Training Devices Instructor (Pilot)		52.81
15050 - Computer Based Training Specialist / Instructor		36.47
15060 - Educational Technologist		36.80
15070 - Flight Instructor (Pilot)		52.81
15080 - Graphic Artist		30.47
15085 - Maintenance Test Pilot, Fixed, Jet/Prop		48.72
15086 - Maintenance Test Pilot, Rotary Wing		48.72
15088 - Non-Maintenance Test/Co-Pilot		48.72
15090 - Technical Instructor		28.79
15095 - Technical Instructor/Course Developer		35.22
15110 - Test Proctor		23.24
15120 - Tutor		23.24
16000 - Laundry, Dry-Cleaning, Pressing And Related Occupations		
16010 - Assembler		11.41
16030 - Counter Attendant		11.41
16040 - Dry Cleaner		14.66
16070 - Finisher, Flatwork, Machine		11.41
16090 - Presser, Hand		11.41
16110 - Presser, Machine, Drycleaning		11.41
16130 - Presser, Machine, Shirts		11.41
16160 - Presser, Machine, Wearing Apparel, Laundry		11.41
16190 - Sewing Machine Operator		15.71
16220 - Tailor		16.64
16250 - Washer, Machine		12.51
19000 - Machine Tool Operation And Repair Occupations		
19010 - Machine-Tool Operator (Tool Room)		24.71
19040 - Tool And Die Maker		28.29
21000 - Materials Handling And Packing Occupations		
21020 - Forklift Operator		18.11
21030 - Material Coordinator		25.24
21040 - Material Expediter		25.24
21050 - Material Handling Laborer		13.83
21071 - Order Filler		15.09
21080 - Production Line Worker (Food Processing)		18.11
21110 - Shipping Packer		17.65
21130 - Shipping/Receiving Clerk		17.65
21140 - Store Worker I		12.49
21150 - Stock Clerk		17.98
21210 - Tools And Parts Attendant		18.11
21410 - Warehouse Specialist		18.11
23000 - Mechanics And Maintenance And Repair Occupations		
23010 - Aerospace Structural Welder		32.92
23019 - Aircraft Logs and Records Technician		23.91
23021 - Aircraft Mechanic I		31.25
23022 - Aircraft Mechanic II		32.92
23023 - Aircraft Mechanic III		34.52
23040 - Aircraft Mechanic Helper		21.22
23050 - Aircraft, Painter		29.92
23060 - Aircraft Servicer		23.91
23070 - Aircraft Survival Flight Equipment Technician		29.92

23080 - Aircraft Worker	25.42
23091 - Aircrew Life Support Equipment (ALSE) Mechanic I	25.42
23092 - Aircrew Life Support Equipment (ALSE) Mechanic II	31.25
23110 - Appliance Mechanic	21.75
23120 - Bicycle Repairer	14.43
23125 - Cable Splicer	31.48
23130 - Carpenter, Maintenance	22.45
23140 - Carpet Layer	20.49
23160 - Electrician, Maintenance	27.98
23181 - Electronics Technician Maintenance I	30.17
23182 - Electronics Technician Maintenance II	32.03
23183 - Electronics Technician Maintenance III	33.75
23260 - Fabric Worker	22.55
23290 - Fire Alarm System Mechanic	22.91
23310 - Fire Extinguisher Repairer	20.77
23311 - Fuel Distribution System Mechanic	27.60
23312 - Fuel Distribution System Operator	23.45
23370 - General Maintenance Worker	21.43
23380 - Ground Support Equipment Mechanic	31.25
23381 - Ground Support Equipment Servicer	23.91
23382 - Ground Support Equipment Worker	25.42
23391 - Gunsmith I	20.77
23392 - Gunsmith II	24.15
23393 - Gunsmith III	27.00
23410 - Heating, Ventilation And Air-Conditioning Mechanic	28.33
23411 - Heating, Ventilation And Air Contidioning Mechanic (Research Facility)	29.84
23430 - Heavy Equipment Mechanic	26.13
23440 - Heavy Equipment Operator	22.91
23460 - Instrument Mechanic	27.34
23465 - Laboratory/Shelter Mechanic	25.64
23470 - Laborer	14.98
23510 - Locksmith	23.54
23530 - Machinery Maintenance Mechanic	27.44
23550 - Machinist, Maintenance	26.10
23580 - Maintenance Trades Helper	18.27
23591 - Metrology Technician I	27.34
23592 - Metrology Technician II	28.79
23593 - Metrology Technician III	30.19
23640 - Millwright	28.19
23710 - Office Appliance Repairer	22.96
23760 - Painter, Maintenance	21.75
23790 - Pipefitter, Maintenance	26.55
23810 - Plumber, Maintenance	25.21
23820 - Pneudraulic Systems Mechanic	27.00
23850 - Rigger	27.72
23870 - Scale Mechanic	24.15
23890 - Sheet-Metal Worker, Maintenance	24.81
23910 - Small Engine Mechanic	20.49
23931 - Telecommunications Mechanic I	29.95
23932 - Telecommunications Mechanic II	31.55
23950 - Telephone Lineman	32.28
23960 - Welder, Combination, Maintenance	24.34
23965 - Well Driller	22.91
23970 - Woodcraft Worker	27.00
23980 - Woodworker	20.77
24000 - Personal Needs Occupations	
24550 - Case Manager	19.40

24570 - Child Care Attendant	12.79
24580 - Child Care Center Clerk	17.77
24610 - Chore Aide	11.57
24620 - Family Readiness And Support Services Coordinator	19.40
24630 - Homemaker	19.40
25000 - Plant And System Operations Occupations	
25010 - Boiler Tender	33.03
25040 - Sewage Plant Operator	24.67
25070 - Stationary Engineer	33.03
25190 - Ventilation Equipment Tender	23.58
25210 - Water Treatment Plant Operator	24.67
27000 - Protective Service Occupations	
27004 - Alarm Monitor	23.09
27007 - Baggage Inspector	15.38
27008 - Corrections Officer	25.08
27010 - Court Security Officer	26.37
27030 - Detection Dog Handler	20.57
27040 - Detention Officer	25.08
27070 - Firefighter	28.10
27101 - Guard I	15.38
27102 - Guard II	20.57
27131 - Police Officer I	29.70
27132 - Police Officer II	33.00
28000 - Recreation Occupations	
28041 - Carnival Equipment Operator	13.59
28042 - Carnival Equipment Repairer	14.63
28043 - Carnival Worker	9.24
28210 - Gate Attendant/Gate Tender	15.74
28310 - Lifeguard	11.59
28350 - Park Attendant (Aide)	17.62
28510 - Recreation Aide/Health Facility Attendant	12.85
28515 - Recreation Specialist	21.82
28630 - Sports Official	14.03
28690 - Swimming Pool Operator	18.21
29000 - Stevedoring/Longshoremen Occupational Services	
29010 - Blocker And Bracer	27.98
29020 - Hatch Tender	27.98
29030 - Line Handler	27.98
29041 - Stevedore I	25.78
29042 - Stevedore II	29.33
30000 - Technical Occupations	
30010 - Air Traffic Control Specialist, Center (HFO) (see 2)	41.44
30011 - Air Traffic Control Specialist, Station (HFO) (see 2)	28.58
30012 - Air Traffic Control Specialist, Terminal (HFO) (see 2)	31.47
30021 - Archeological Technician I	20.19
30022 - Archeological Technician II	22.60
30023 - Archeological Technician III	27.98
30030 - Cartographic Technician	27.98
30040 - Civil Engineering Technician	26.41
30051 - Cryogenic Technician I	24.89
30052 - Cryogenic Technician II	27.49
30061 - Drafter/CAD Operator I	20.19
30062 - Drafter/CAD Operator II	22.60
30063 - Drafter/CAD Operator III	25.19
30064 - Drafter/CAD Operator IV	31.00
30081 - Engineering Technician I	22.92
30082 - Engineering Technician II	25.72
30083 - Engineering Technician III	28.79
30084 - Engineering Technician IV	35.64
30085 - Engineering Technician V	43.61

30086 - Engineering Technician VI	52.76
30090 - Environmental Technician	27.41
30095 - Evidence Control Specialist	22.47
30210 - Laboratory Technician	24.41
30221 - Latent Fingerprint Technician I	33.09
30222 - Latent Fingerprint Technician II	36.55
30240 - Mathematical Technician	28.94
30361 - Paralegal/Legal Assistant I	21.36
30362 - Paralegal/Legal Assistant II	26.47
30363 - Paralegal/Legal Assistant III	32.36
30364 - Paralegal/Legal Assistant IV	39.16
30375 - Petroleum Supply Specialist	27.49
30390 - Photo-Optics Technician	27.98
30395 - Radiation Control Technician	27.49
30461 - Technical Writer I	25.75
30462 - Technical Writer II	31.51
30463 - Technical Writer III	38.12
30491 - Unexploded Ordnance (UXO) Technician I	26.34
30492 - Unexploded Ordnance (UXO) Technician II	31.87
30493 - Unexploded Ordnance (UXO) Technician III	38.20
30494 - Unexploded (UXO) Safety Escort	26.34
30495 - Unexploded (UXO) Sweep Personnel	26.34
30501 - Weather Forecaster I	26.93
30502 - Weather Forecaster II	32.75
30620 - Weather Observer, Combined Upper Air Or	(see 2) 25.19
Surface Programs	
30621 - Weather Observer, Senior	(see 2) 27.98
31000 - Transportation/Mobile Equipment Operation Occupations	
31010 - Airplane Pilot	31.87
31020 - Bus Aide	14.32
31030 - Bus Driver	20.85
31043 - Driver Courier	15.38
31260 - Parking and Lot Attendant	11.06
31290 - Shuttle Bus Driver	16.83
31310 - Taxi Driver	13.98
31361 - Truckdriver, Light	16.83
31362 - Truckdriver, Medium	18.28
31363 - Truckdriver, Heavy	20.54
31364 - Truckdriver, Tractor-Trailer	20.54
99000 - Miscellaneous Occupations	
99020 - Cabin Safety Specialist	15.54
99030 - Cashier	10.51
99050 - Desk Clerk	12.92
99095 - Embalmer	27.90
99130 - Flight Follower	26.34
99251 - Laboratory Animal Caretaker I	13.24
99252 - Laboratory Animal Caretaker II	14.47
99260 - Marketing Analyst	33.51
99310 - Mortician	34.10
99410 - Pest Controller	18.70
99510 - Photofinishing Worker	13.20
99710 - Recycling Laborer	19.20
99711 - Recycling Specialist	23.54
99730 - Refuse Collector	17.01
99810 - Sales Clerk	12.09
99820 - School Crossing Guard	16.25
99830 - Survey Party Chief	25.06
99831 - Surveying Aide	15.57
99832 - Surveying Technician	23.81
99840 - Vending Machine Attendant	15.48
99841 - Vending Machine Repairer	19.67

99842 - Vending Machine Repairer Helper

15.48

Note: Executive Order (EO) 13706, Establishing Paid Sick Leave for Federal Contractors, applies to all contracts subject to the Service Contract Act for which the contract is awarded (and any solicitation was issued) on or after January 1, 2017. If this contract is covered by the EO, the contractor must provide employees with 1 hour of paid sick leave for every 30 hours they work, up to 56 hours of paid sick leave each year. Employees must be permitted to use paid sick leave for their own illness, injury or other health-related needs, including preventive care; to assist a family member (or person who is like family to the employee) who is ill, injured, or has other health-related needs, including preventive care; or for reasons resulting from, or to assist a family member (or person who is like family to the employee) who is the victim of, domestic violence, sexual assault, or stalking. Additional information on contractor requirements and worker protections under the EO is available at www.dol.gov/whd/govcontracts.

ALL OCCUPATIONS LISTED ABOVE RECEIVE THE FOLLOWING BENEFITS:

HEALTH & WELFARE: \$4.41 per hour or \$176.40 per week or \$764.40 per month

HEALTH & WELFARE EO 13706: \$4.13 per hour, or \$165.20 per week, or \$715.87 per month

VACATION: 2 weeks paid vacation after 1 year of service with a contractor or successor, 3 weeks after 5 years, and 4 weeks after 15 years. Length of service includes the whole span of continuous service with the present contractor or successor, wherever employed, and with the predecessor contractors in the performance of similar work at the same Federal facility. (Reg. 29 CFR 4.173)

HOLIDAYS: A minimum of ten paid holidays per year: New Year's Day, Martin Luther King Jr.'s Birthday, Washington's Birthday, Memorial Day, Independence Day, Labor Day, Columbus Day, Veterans' Day, Thanksgiving Day, and Christmas Day. (A contractor may substitute for any of the named holidays another day off with pay in accordance with a plan communicated to the employees involved.) (See 29 CFR 4.174)

THE OCCUPATIONS WHICH HAVE NUMBERED FOOTNOTES IN PARENTHESES RECEIVE THE FOLLOWING:

1) COMPUTER EMPLOYEES: Under the SCA at section 8(b), this wage determination does not apply to any employee who individually qualifies as a bona fide executive, administrative, or professional employee as defined in 29 C.F.R. Part 541. Because most Computer System Analysts and Computer Programmers who are compensated at a rate not less than \$27.63 (or on a salary or fee basis at a rate not less than \$455 per week) an hour would likely qualify as exempt computer professionals, (29 C.F.R. 541.400) wage rates may not be listed on this wage determination for all occupations within those job families. In addition, because this wage determination may not list a wage rate for some or all occupations within those job families if the survey data indicates that the prevailing wage rate for the occupation equals or exceeds \$27.63 per hour conformances may be necessary for certain nonexempt employees. For example, if an individual employee is nonexempt but nevertheless performs duties within the scope of one of the Computer Systems Analyst or Computer Programmer occupations for which this wage determination does not specify an SCA wage rate, then the wage rate for that employee must be conformed in accordance with the conformance procedures described in the conformance note included on this wage determination.

Additionally, because job titles vary widely and change quickly in the computer

industry, job titles are not determinative of the application of the computer professional exemption. Therefore, the exemption applies only to computer employees who satisfy the compensation requirements and whose primary duty consists of:

(1) The application of systems analysis techniques and procedures, including consulting with users, to determine hardware, software or system functional specifications;

(2) The design, development, documentation, analysis, creation, testing or modification of computer systems or programs, including prototypes, based on and related to user or system design specifications;

(3) The design, documentation, testing, creation or modification of computer programs related to machine operating systems; or

(4) A combination of the aforementioned duties, the performance of which requires the same level of skills. (29 C.F.R. 541.400).

2) AIR TRAFFIC CONTROLLERS AND WEATHER OBSERVERS - NIGHT PAY & SUNDAY PAY: If you work at night as part of a regular tour of duty, you will earn a night differential and receive an additional 10% of basic pay for any hours worked between 6pm and 6am.

If you are a full-time employed (40 hours a week) and Sunday is part of your regularly scheduled workweek, you are paid at your rate of basic pay plus a Sunday premium of 25% of your basic rate for each hour of Sunday work which is not overtime (i.e. occasional work on Sunday outside the normal tour of duty is considered overtime work).

**** HAZARDOUS PAY DIFFERENTIAL ****

An 8 percent differential is applicable to employees employed in a position that represents a high degree of hazard when working with or in close proximity to ordnance, explosives, and incendiary materials. This includes work such as screening, blending, dying, mixing, and pressing of sensitive ordnance, explosives, and pyrotechnic compositions such as lead azide, black powder and photoflash powder.

All dry-house activities involving propellants or explosives. Demilitarization, modification, renovation, demolition, and maintenance operations on sensitive ordnance, explosives and incendiary materials. All operations involving re-grading and cleaning of artillery ranges.

A 4 percent differential is applicable to employees employed in a position that represents a low degree of hazard when working with, or in close proximity to ordnance, (or employees possibly adjacent to) explosives and incendiary materials which involves potential injury such as laceration of hands, face, or arms of the employee engaged in the operation, irritation of the skin, minor burns and the like; minimal damage to immediate or adjacent work area or equipment being used. All operations involving, unloading, storage, and hauling of ordnance, explosive, and incendiary ordnance material other than small arms ammunition. These differentials are only applicable to work that has been specifically designated by the agency for ordnance, explosives, and incendiary material differential pay.

**** UNIFORM ALLOWANCE ****

If employees are required to wear uniforms in the performance of this contract (either by the terms of the Government contract, by the employer, by the state or local law, etc.), the cost of furnishing such uniforms and maintaining (by laundering or dry cleaning) such uniforms is an expense that may not be borne by an employee where such cost reduces the hourly rate below that required by the wage determination. The Department of Labor will accept payment in accordance with the following standards as compliance:

The contractor or subcontractor is required to furnish all employees with an adequate number of uniforms without cost or to reimburse employees for the actual cost of the uniforms. In addition, where uniform cleaning and maintenance is made the responsibility of the employee, all contractors and subcontractors subject to

this wage determination shall (in the absence of a bona fide collective bargaining agreement providing for a different amount, or the furnishing of contrary affirmative proof as to the actual cost), reimburse all employees for such cleaning and maintenance at a rate of \$3.35 per week (or \$.67 cents per day). However, in those instances where the uniforms furnished are made of "wash and wear" materials, may be routinely washed and dried with other personal garments, and do not require any special treatment such as dry cleaning, daily washing, or commercial laundering in order to meet the cleanliness or appearance standards set by the terms of the Government contract, by the contractor, by law, or by the nature of the work, there is no requirement that employees be reimbursed for uniform maintenance costs.

**** SERVICE CONTRACT ACT DIRECTORY OF OCCUPATIONS ****

The duties of employees under job titles listed are those described in the "Service Contract Act Directory of Occupations", Fifth Edition (Revision 1), dated September 2015, unless otherwise indicated.

**** REQUEST FOR AUTHORIZATION OF ADDITIONAL CLASSIFICATION AND WAGE RATE, Standard Form 1444 (SF-1444) ****

Conformance Process:

The contracting officer shall require that any class of service employee which is not listed herein and which is to be employed under the contract (i.e., the work to be performed is not performed by any classification listed in the wage determination), be classified by the contractor so as to provide a reasonable relationship (i.e., appropriate level of skill comparison) between such unlisted classifications and the classifications listed in the wage determination (See 29 CFR 4.6(b)(2)(i)). Such conforming procedures shall be initiated by the contractor prior to the performance of contract work by such unlisted class(es) of employees (See 29 CFR 4.6(b)(2)(ii)). The Wage and Hour Division shall make a final determination of conformed classification, wage rate, and/or fringe benefits which shall be paid to all employees performing in the classification from the first day of work on which contract work is performed by them in the classification. Failure to pay such unlisted employees the compensation agreed upon by the interested parties and/or fully determined by the Wage and Hour Division retroactive to the date such class of employees commenced contract work shall be a violation of the Act and this contract. (See 29 CFR 4.6(b)(2)(v)). When multiple wage determinations are included in a contract, a separate SF-1444 should be prepared for each wage determination to which a class(es) is to be conformed.

The process for preparing a conformance request is as follows:

- 1) When preparing the bid, the contractor identifies the need for a conformed occupation(s) and computes a proposed rate(s).
- 2) After contract award, the contractor prepares a written report listing in order the proposed classification title(s), a Federal grade equivalency (FGE) for each proposed classification(s), job description(s), and rationale for proposed wage rate(s), including information regarding the agreement or disagreement of the authorized representative of the employees involved, or where there is no authorized representative, the employees themselves. This report should be submitted to the contracting officer no later than 30 days after such unlisted class(es) of employees performs any contract work.
- 3) The contracting officer reviews the proposed action and promptly submits a report of the action, together with the agency's recommendations and pertinent information including the position of the contractor and the employees, to the U.S. Department of Labor, Wage and Hour Division, for review (See 29 CFR 4.6(b)(2)(ii)).
- 4) Within 30 days of receipt, the Wage and Hour Division approves, modifies, or

disapproves the action via transmittal to the agency contracting officer, or notifies the contracting officer that additional time will be required to process the request.

5) The contracting officer transmits the Wage and Hour Division's decision to the contractor.

6) Each affected employee shall be furnished by the contractor with a written copy of such determination or it shall be posted as a part of the wage determination (See 29 CFR 4.6(b)(2)(iii)).

Information required by the Regulations must be submitted on SF-1444 or bond paper.

When preparing a conformance request, the "Service Contract Act Directory of Occupations" should be used to compare job definitions to ensure that duties requested are not performed by a classification already listed in the wage determination. Remember, it is not the job title, but the required tasks that determine whether a class is included in an established wage determination. Conformances may not be used to artificially split, combine, or subdivide classifications listed in the wage determination (See 29 CFR 4.152(c)(1)).